

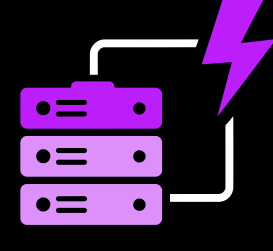
Inside the AI DATA CENTER

Why Copper Carries the Load

AI is reshaping data centers to handle more power and heat with greater efficiency. Copper is essential in making it all work.

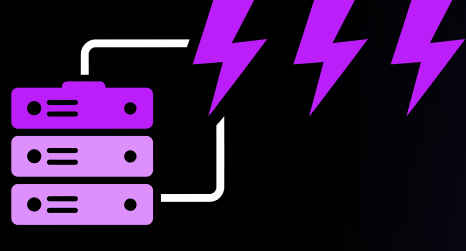
HIGHER DENSITY CHANGES EVERYTHING

Rack power demands are rising as AI pushes infrastructure beyond traditional density ranges



10-30 kW

the range driving **current** rack demand



600+ kW

the power level emerging for **next-generation** AI racks



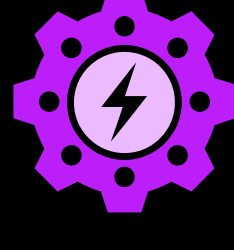
But

82%

of facilities have racks **below** 30 kW

AI IS DRIVING INFRASTRUCTURE UPGRADES

Higher-density AI environments are increasing the need for power and cooling upgrades



52%

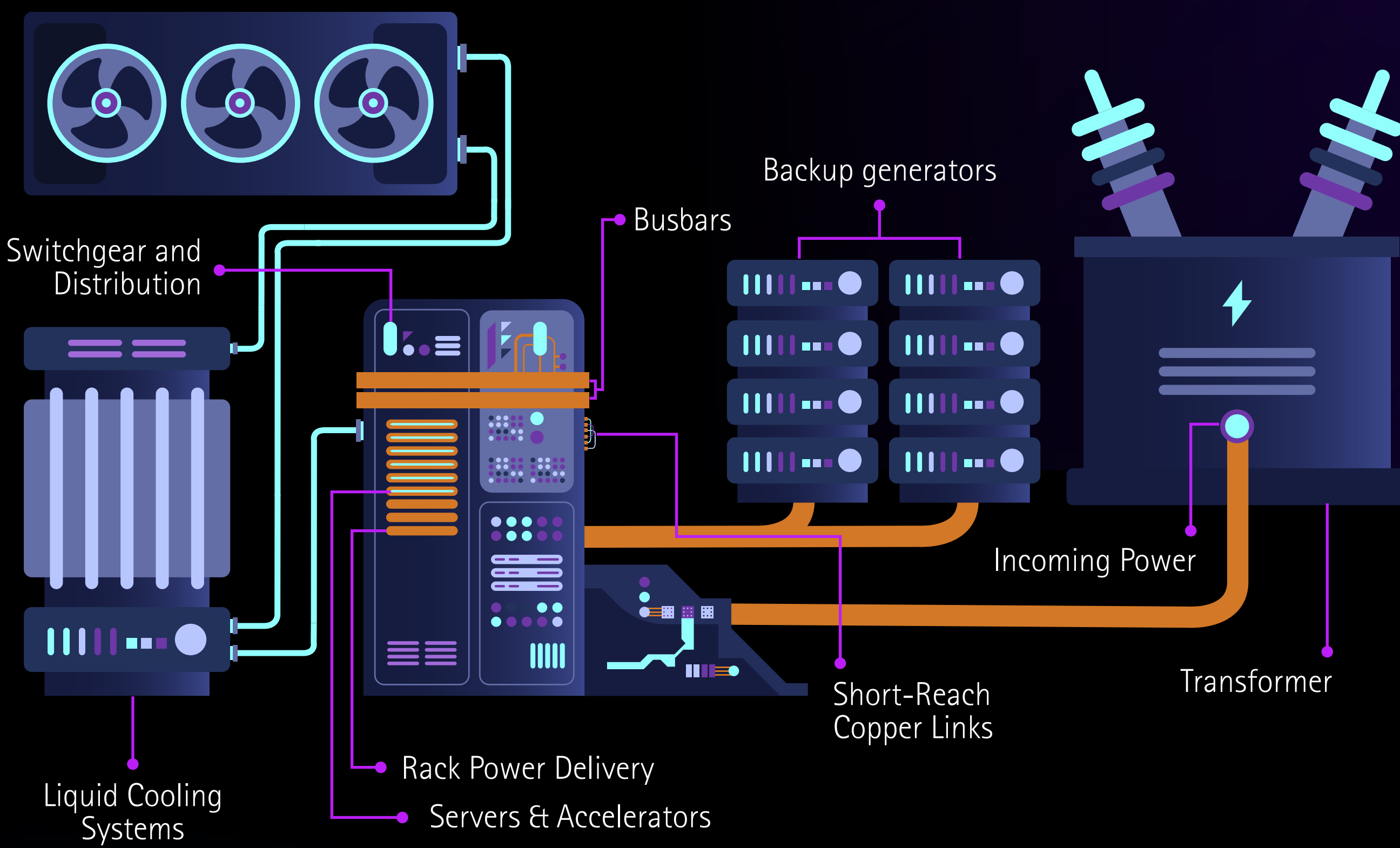
of operators hosting AI workloads are upgrading **power** systems



51%

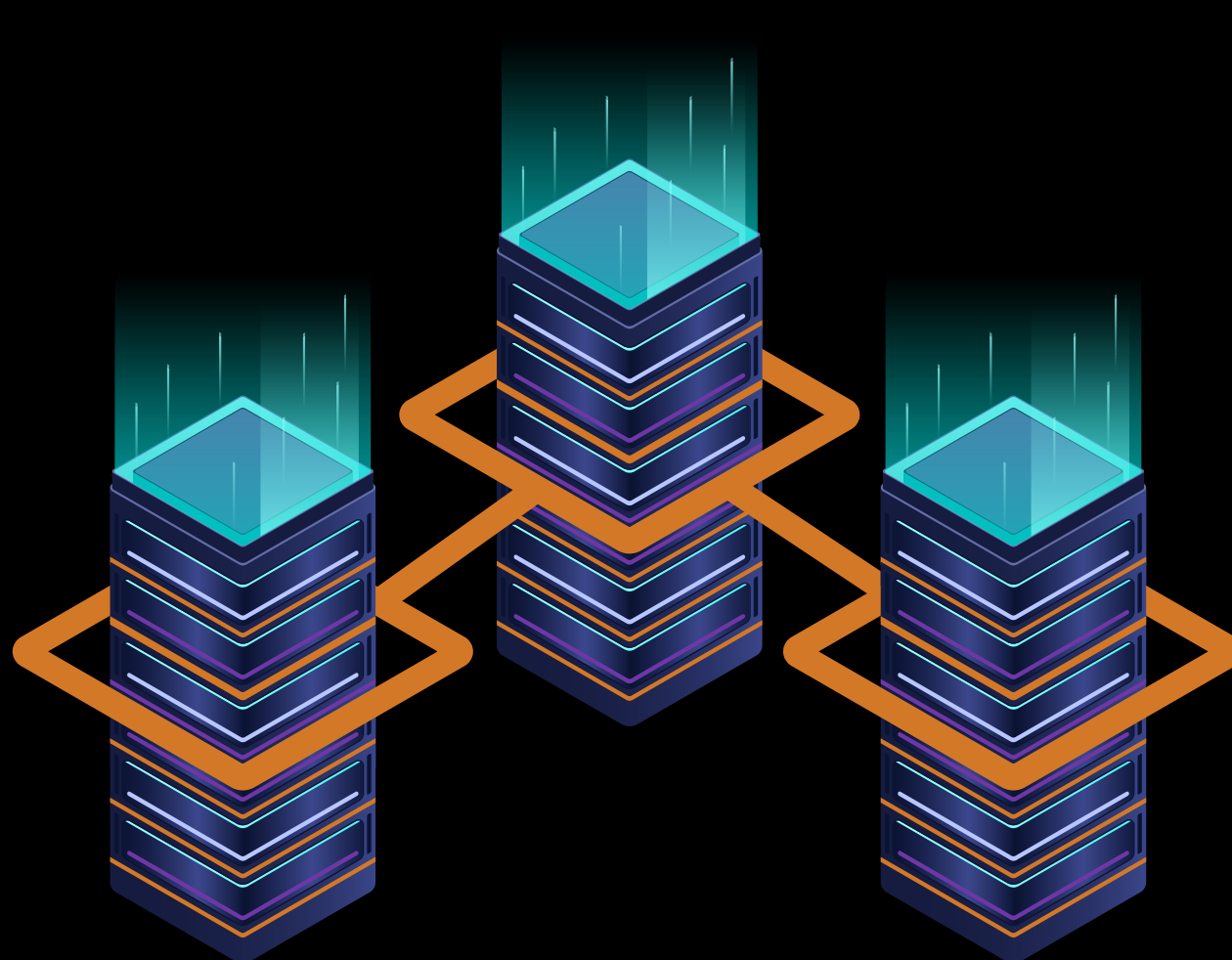
of operators hosting AI workloads are upgrading **cooling** systems

COPPER ACROSS THE DATA CENTER



Saving space and handling high loads
compact copper busbars

Moving more power efficiently
with high-current pathways delivering energy



Managing heat at the source
copper cold plates for liquid cooling

Built for Uptime. Ready for the Future.

More compute. More power. More cooling. Copper carries the load.

COPPER POWERS PROGRESS.

Data. Buildings. Energy.



Copper Development Association Inc.

